

Finalist: Pancreatic Cancer

Seoul National University Hospital

South Korea

Dr. Jeong Min Lee & Team

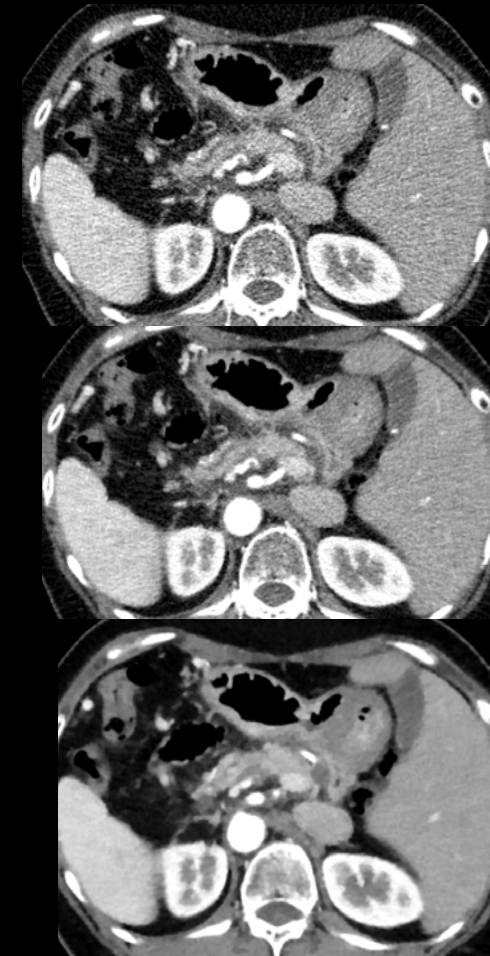
“Pancreatic cancer on Chemotherapy (3 times f-u scanning). Reduced lesion size after CTx, better visibility in small lesion with IMR than FBP and iDose⁴. ”

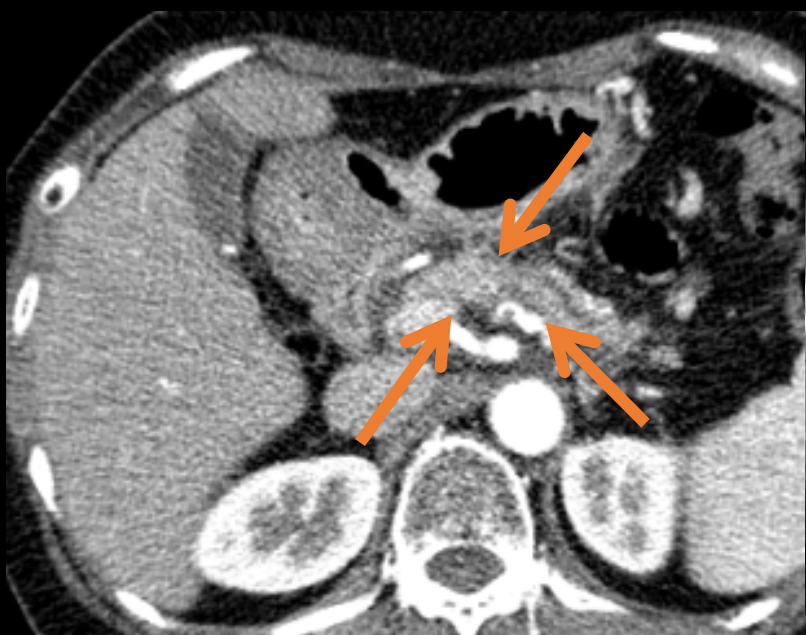
Parameters:

Scanner: iCT

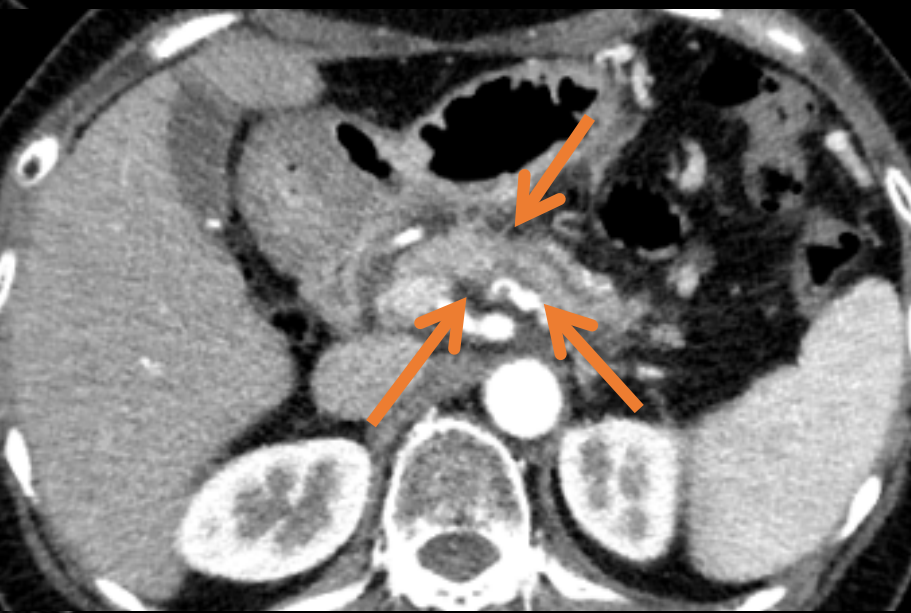
kVp: 80

Dose: 1.5 mSv (arterial), 2.9 mSv (portal)

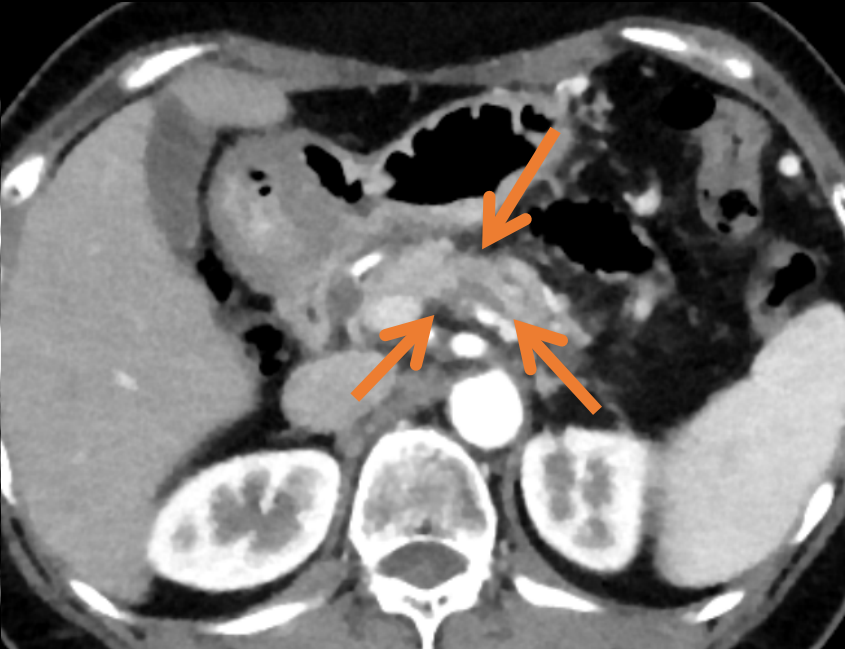




2015-10-09 FU, FBP

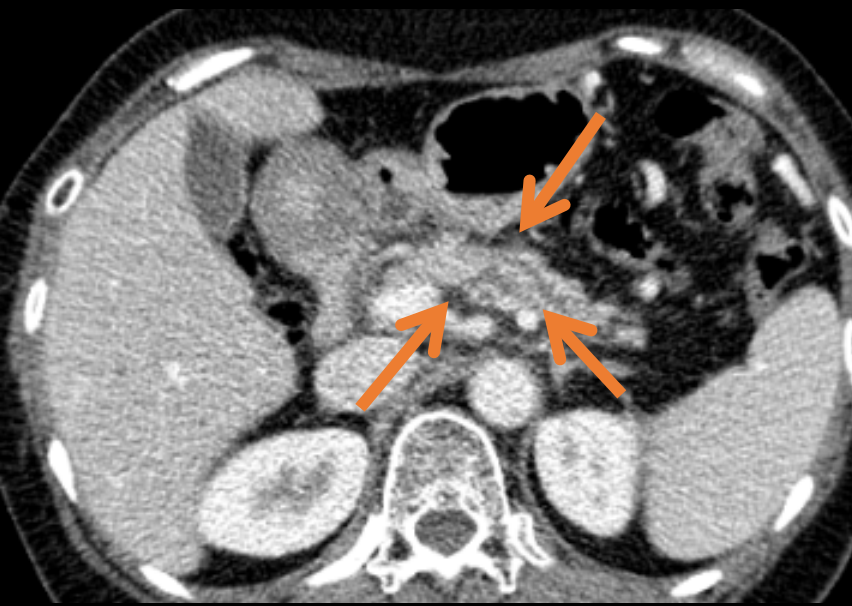


2015-10-09 FU, iDose⁴

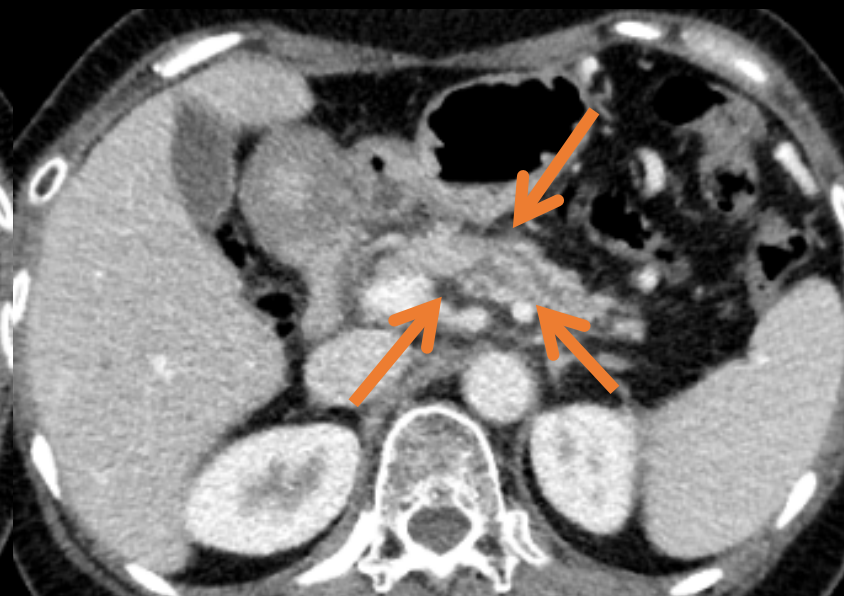


IMR S1

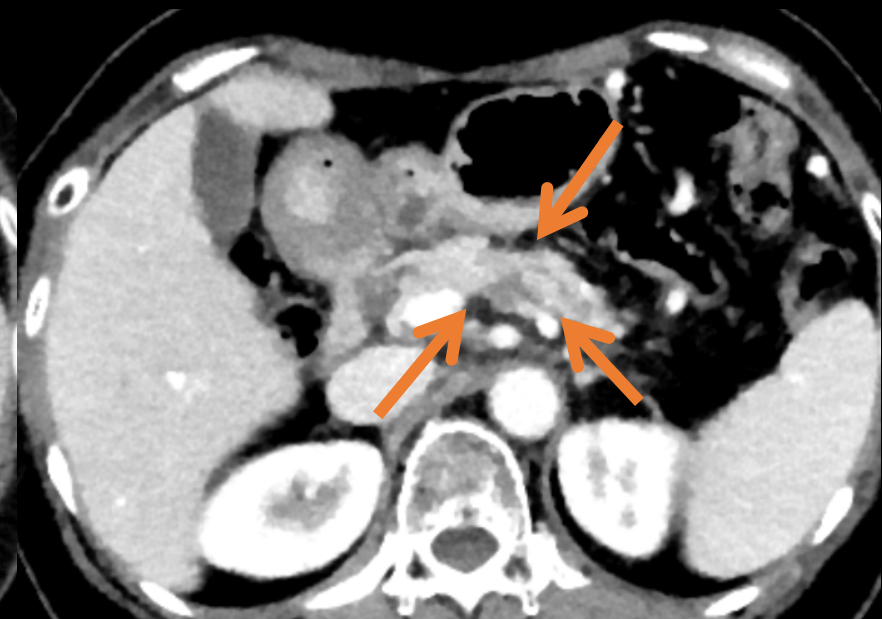
LAP



2015-10-09 FU, FBP



2015-10-09 FU, iDose⁴



IMR S1

PVP