

# IMR Case of the Year Winner: Non-Contrast Pulmonary Embolism

Einstein Healthcare Network

United States

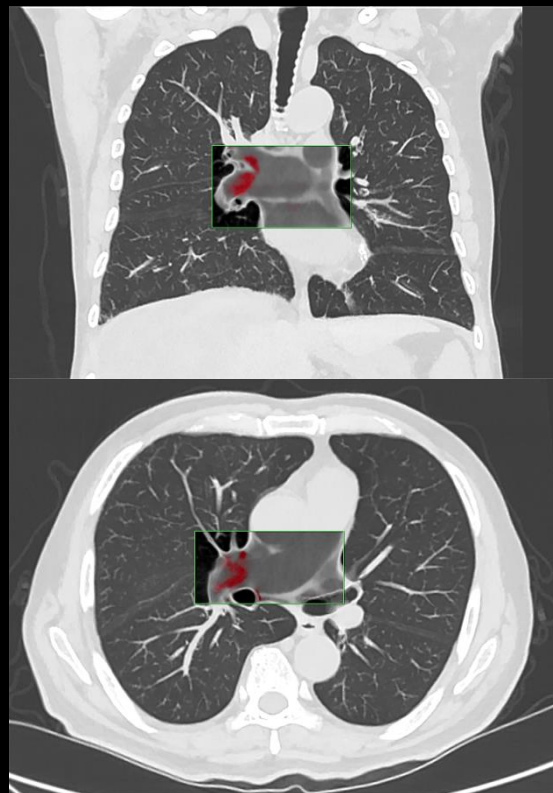
Dr. Terence Matalon, Dr. Thomas Reilly, & Team

“On a non-contrast CT chest, IMR allowed for improved visualization of hyper-dense thrombus in the pulmonary artery (pulmonary embolism). This was confirmed with subsequent contrast enhanced CT.”

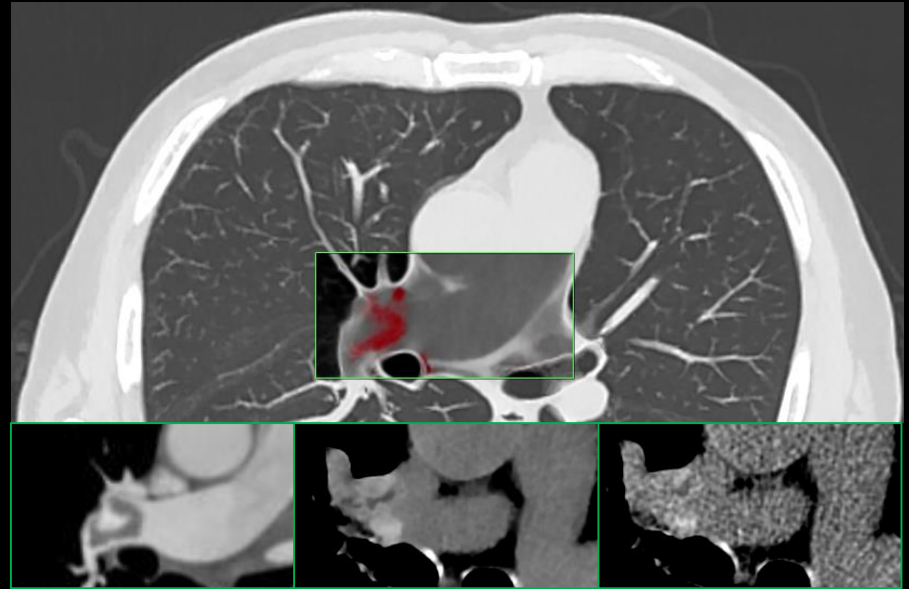
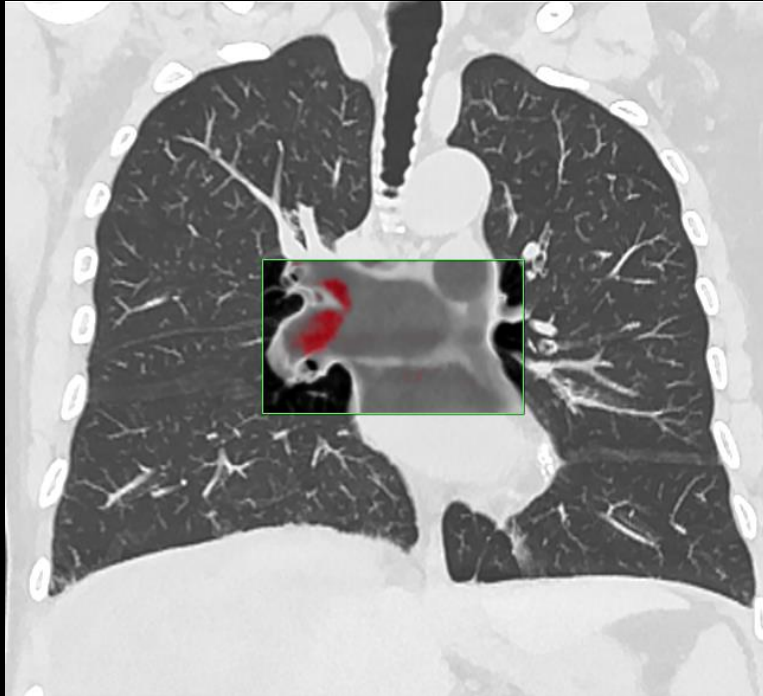
## Parameters:

- iCT
- kVp: 120
- mAs: 50
- Scan Length: 27.5 cm
- Scan Time: 2.2 sec
- CTDIvol: 3.3 mGy
- Dose: 1.7 mSv\*

\*AAPM Technical Report 96



# Non-Contrast PE with IMR



IMR  
w Contrast

IMR  
w/o Contrast

iDose<sup>4</sup>  
w/o Contrast